

4 Using the Site Management Rights

About This Chapter

The operations of the site management rights consist of obtaining the site management right and releasing the site management right.

[4.1 Site Management Rights](#)

The site management rights refer to the rights to set the parameters of a BTS. After a BTS is powered on, the remote Site Maintenance System obtains the site management right by default. Before operating the BTS through the Site Maintenance Terminal System, you should obtain the site management right.

[4.2 Obtaining the Site Management Rights](#)

This function is performed to obtain the right for setting parameters of the BTS.

[4.3 Releasing the site management rights](#)

This function is performed to release the right for setting parameters of the BTS. After completing an operation, you must release the site management rights.

4.1 Site Management Rights

The site management rights refer to the rights to set the parameters of a BTS. After a BTS is powered on, the remote Site Maintenance System obtains the site management right by default. Before operating the BTS through the Site Maintenance Terminal System, you should obtain the site management right.

Pay attention to the following points when you operate a BTS through the Site Maintenance Terminal System.

- Obtain the site management right before writing data; otherwise, you cannot write data, for example, perform software load or software activation. You can read data from the BTS without the site management right.
- After a BTS is powered on, the remote Site Maintenance System obtains the site management right by default and can perform all the operations directly. Before operating the BTS through the Site Maintenance Terminal System, you should obtain the site management right. You cannot operate the BTS through the Site Maintenance Terminal System and the remote Site Maintenance System at the same time.
- After finishing an operation, you must release the site management right.

NOTE

- Remote Site Maintenance: maintain the BTS through the LMT at the BSC side.
- Site Maintenance Terminal: directly connect with the BTS through the Ethernet ports.

4.2 Obtaining the Site Management Rights

This function is performed to obtain the right for setting parameters of the BTS.

Prerequisite

You have logged in to the BTS through the Site Maintenance Terminal.

Context

After logging in to the Site Maintenance Terminal System, you need to obtain the site management rights before operation.

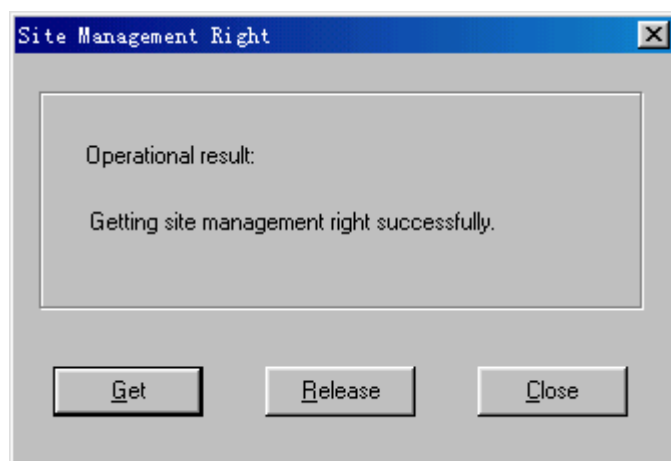
Procedure

Step 1 In the left pane of the **Site Maintenance Terminal System** window, select **Site**. In the right pane of the window, double-click **Site Management Right**.

The **Site Management Right** dialog box is displayed.

Step 2 Click **Get**. The result is displayed in the dialog box, as shown in [Figure 4-1](#).

Figure 4-1 Obtaining the site management rights



----End

4.3 Releasing the site management rights

This function is performed to release the right for setting parameters of the BTS. After completing an operation, you must release the site management rights.

Prerequisite

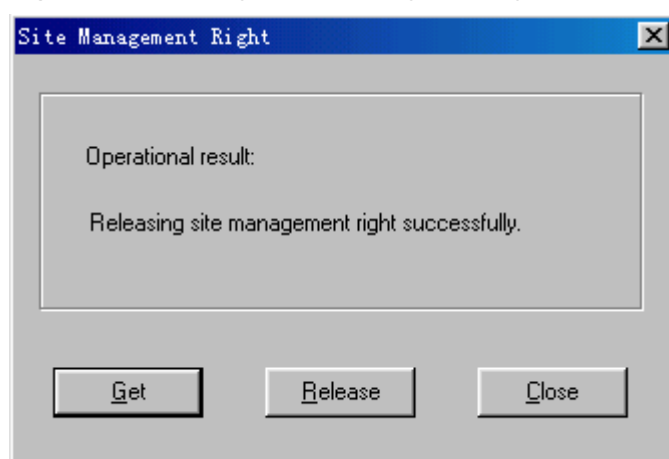
You have logged in to the BTS through the Site Maintenance Terminal.

Context

After completing an operation, you should release the site management rights to facilitate the remote Site Maintenance. If you do not release the site management rights on the Site Maintenance Terminal System, you cannot rewrite anything on the remote Site Maintenance System.

Procedure

- Step 1** In the left pane of the **Site Maintenance Terminal System** window, select **Site**. In the right pane of the window, double-click **Site Management Right**.
The **Site Management Right** dialog box is displayed.
- Step 2** Click **Release**. The result is displayed in the dialog box, as shown in [Figure 4-2](#).

Figure 4-2 Releasing the site management rights

----End